



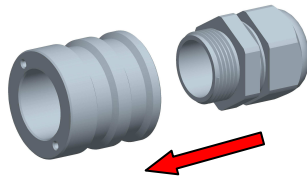
Handling Instruction

opticalCON | NAOBO

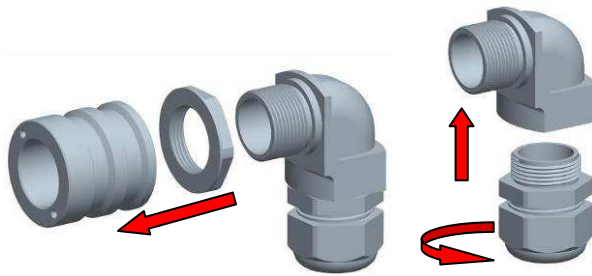


- A** NAOBO components
- ① cable tie
 - ② 2 screws
 - ③ opticalCON chassis connector (not included)
 - ④ NAOBO housing
 - ⑤ counter nut
 - ⑥ 90° rear-shell (use for 90° mount)
 - ⑦ PG-gland

STRAIGHT mount



B 90° mount



- B** Screw NAOBO housing ④ and the PG-gland ⑦ together.

90° mount

Don't forget the 90° degree rear-shell ⑥.

NEUTRIK AG
Liechtenstein
Tel.: +423/237 24 24
Fax: +423/232 53 93
www.neutrik.com

NEUTRIK (UK) Ltd.
Great Britain
Tel.: +44 1983/811 441
Fax: +44 1983/811 439

NEUTRIK USA INC.
USA
Tel.: +1 732/901 9488
Fax: +1 732/901 9608

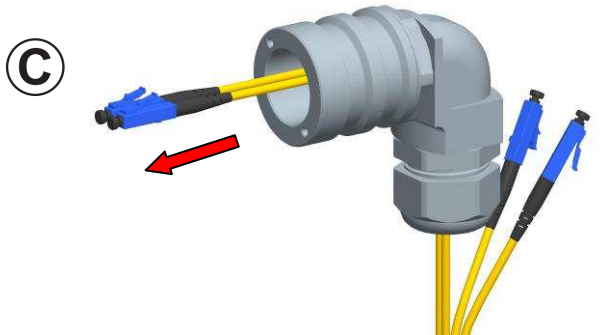
NEUTRIK Tokyo Ltd.
Japan
Tel.: +81 3/3663 4733
Fax: +81 3/3663 4796

NEUTRIK France
France
Tel.: +33 1/4131 6750
Fax: +33 1/4131 0511

NEUTRIK Vertriebs GmbH
Germany/Netherlands/Austria
Tel.: +49 8131/28 08 90
Fax: +49 8131/28 08-30

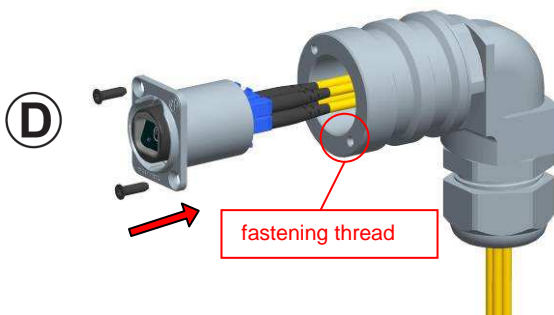
Draft. Nr.: BDA256
Update: 18.10.2010

NEUTRIK

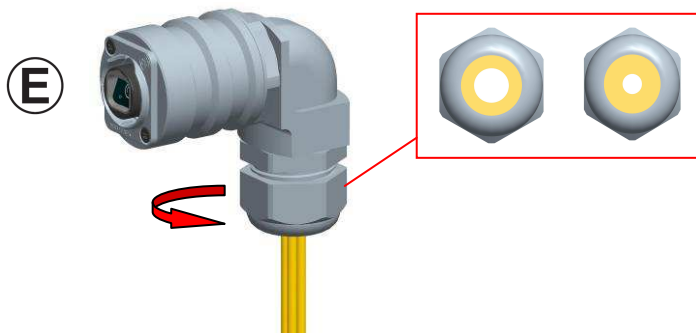


- ③ Guide all LC cables carefully through the NAOBO housing ④.

ATTENTION: Make sure that the dust caps cover the LC-ferrules.



- ④ Remove dust caps and connect the LC cables to the rear side of the opticalCON chassis connector ② and mount chassis With help of the screws ②.



- ⑤ Tighten PG-gland ⑦ to reduce inner diameter of the insert and achieve a correct cable retention.



- ⑥ Use cable tie ① to attach NAOBO to equipment (e.g. rack), rigs, etc.